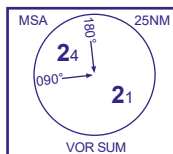


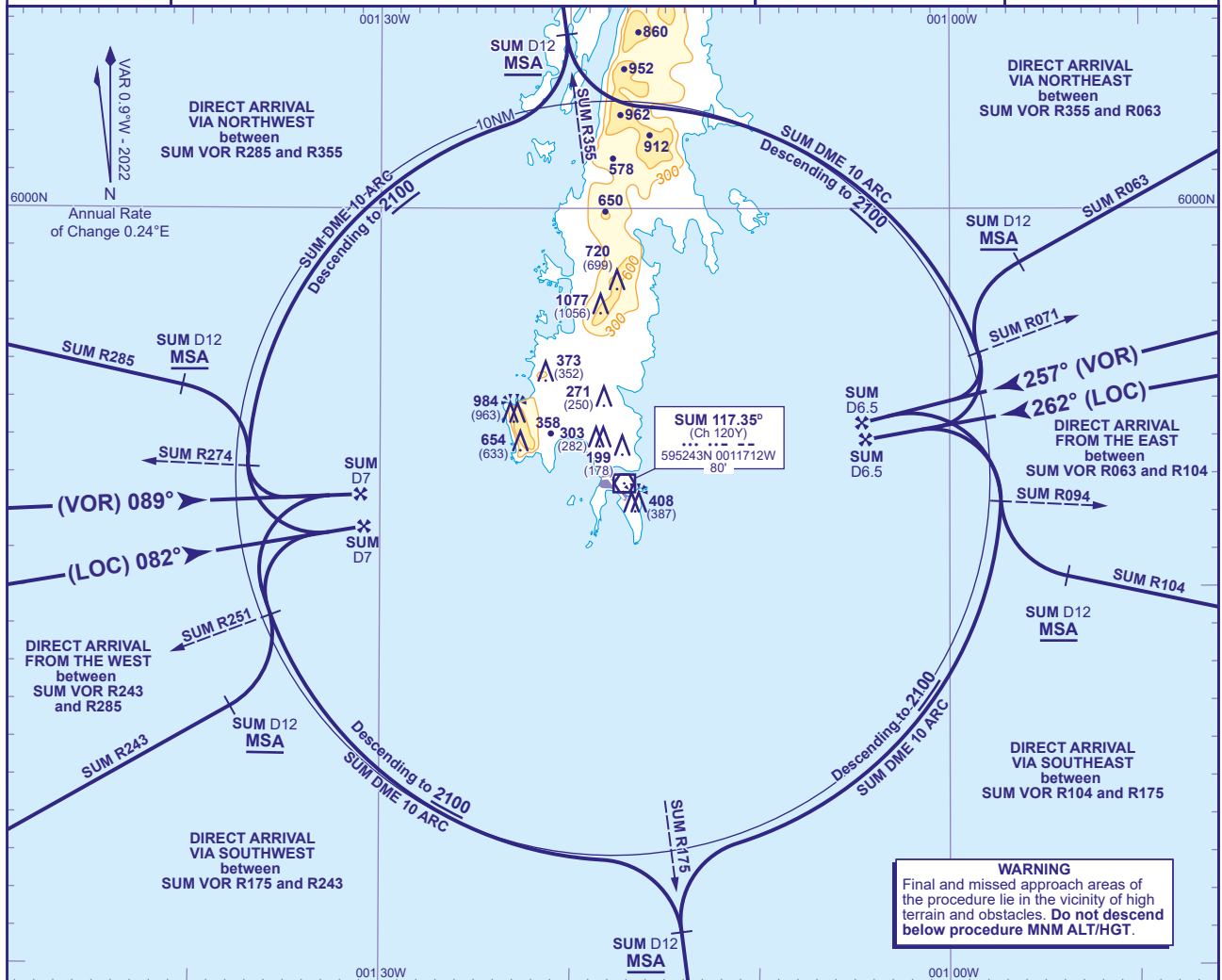
STANDARD APPROACH CHART - ICAO

SUMBURGH
Direct Arrivals
RWY 09/27
(ACFT CAT A,B,C)



TWR 118.255	SUMBURGH TOWER	AD ELEVATION 21
RAD 131.300, 123.155	SUMBURGH RADAR	
ATIS 125.855	SUMBURGH INFORMATION	OBSTACLE ELEVATION 1077 AMSL (1056) (ABOVE THR)
AFIS 118.255	SUMBURGH INFORMATION	
		BEARINGS ARE MAGNETIC

TRANSITION ALTITUDE
6000



DIRECT ARRIVALS RWY 09

From the Northwest (SUM VOR R285 to R355)

Track towards VOR SUM on any radial between SUM VOR R285 and R355 **not below MSA**. At SUM DME 12 turn right to establish on the SUM DME 10 arc anti-clockwise. Once established on the arc descend to **not below 2100**. At SUM R274 turn left to establish on the LOC or FAT. Once established continue as for main procedure.

From the Southwest (SUM VOR R175 to R243)

Track towards VOR SUM on any radial between SUM VOR R175 and R243 **not below MSA**. At SUM DME 12 turn left to establish on the SUM DME 10 arc clockwise. Once established on the arc descend to **not below 2100**. At SUM R251 turn right to establish on the LOC or FAT. Once established continue as for main procedure.

From the West (SUM VOR R243 to R285)

Establish on the extended LOC or FAT **not below MSA**. Once established descend to **2100** and continue as for main procedure.

DIRECT ARRIVALS RWY 27

From the Northeast (SUM VOR R355 to R063)

Track towards VOR SUM on any radial between SUM VOR R355 and R063 **not below MSA**. At SUM DME 12 turn left to establish on the SUM DME 10 arc clockwise. Once established on the arc descend to **not below 2100**. At SUM R071 turn right to establish on the LOC or FAT. Once established continue as for main procedure.

From the Southeast (SUM VOR R104 to R175)

Track towards VOR SUM on any radial between SUM VOR R104 and R175 **not below MSA**. At SUM DME 12 turn right to establish on the SUM DME 10 arc anti-clockwise. Once established on the arc descend to **not below 2100**. At SUM R094 turn left to establish on the LOC or FAT. Once established continue as for main procedure.

From the East (SUM VOR R063 to R104)

Establish on the extended LOC or FAT **not below MSA**. Once established descend to **2100** and continue as for main procedure.

CHANGE (13/23): VOR/DME SUM RECALIBRATED. RADIALS.